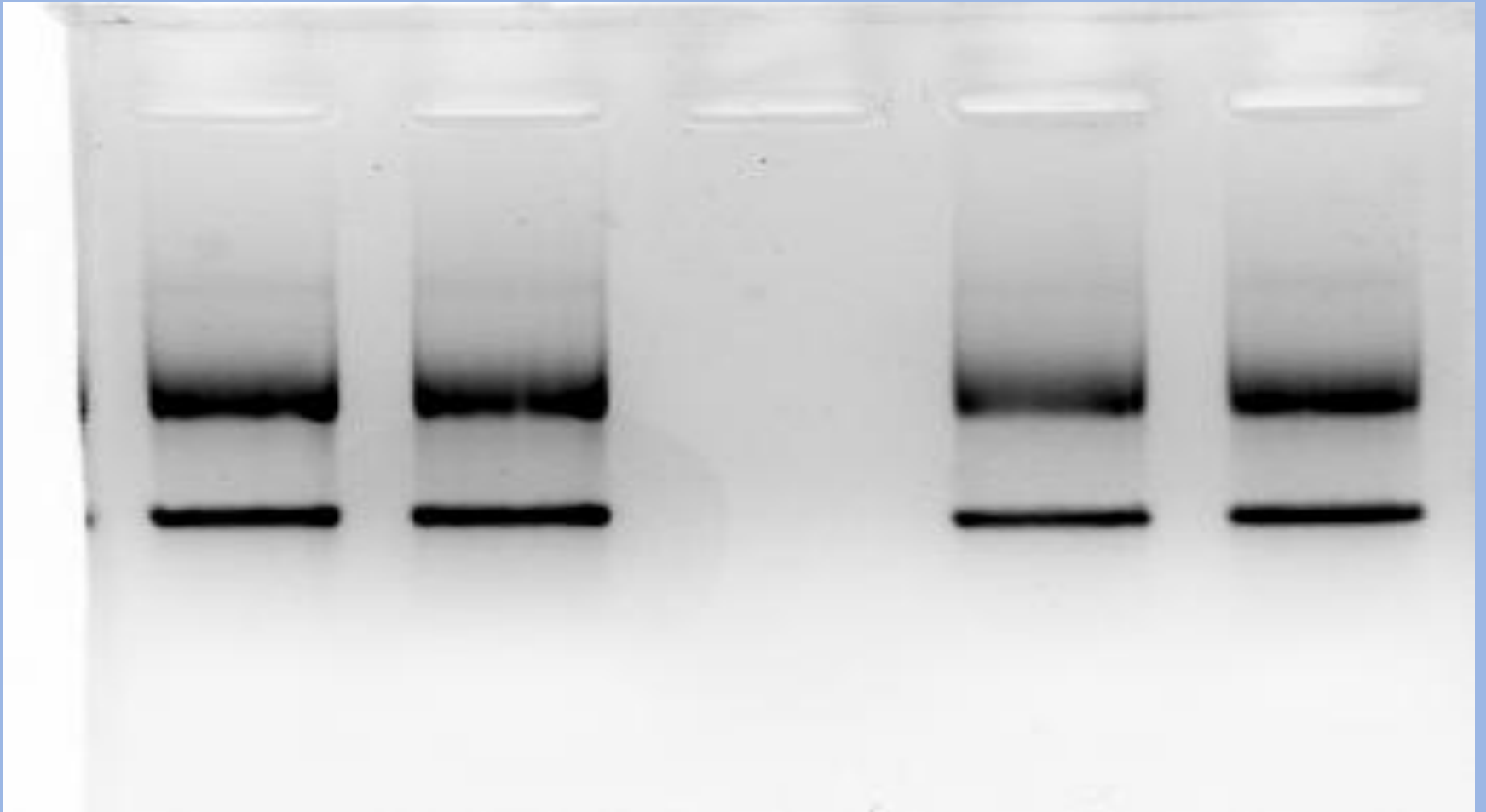


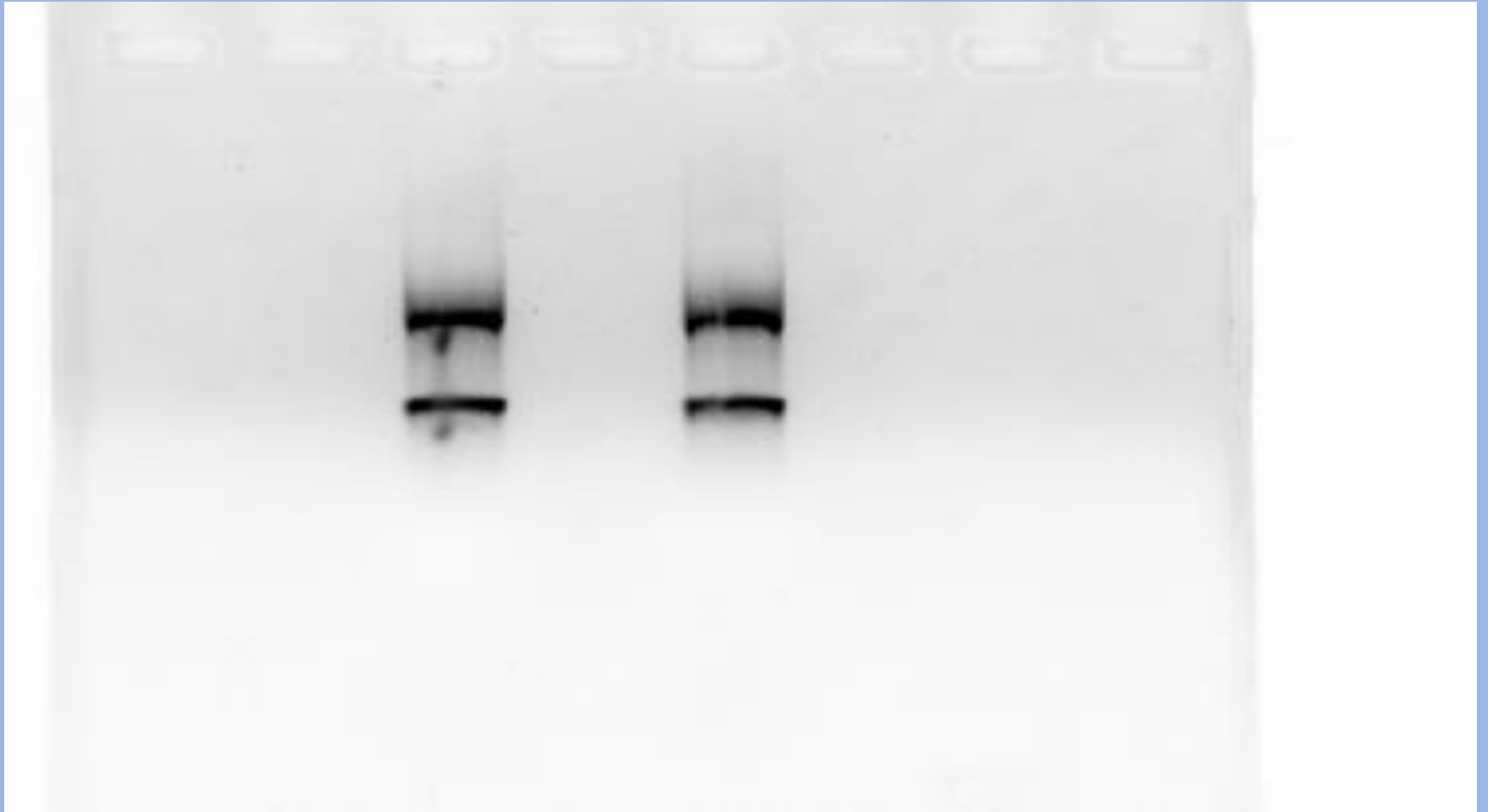
# Evaluation and Eventual Troubleshooting

RNA isolation and quality control

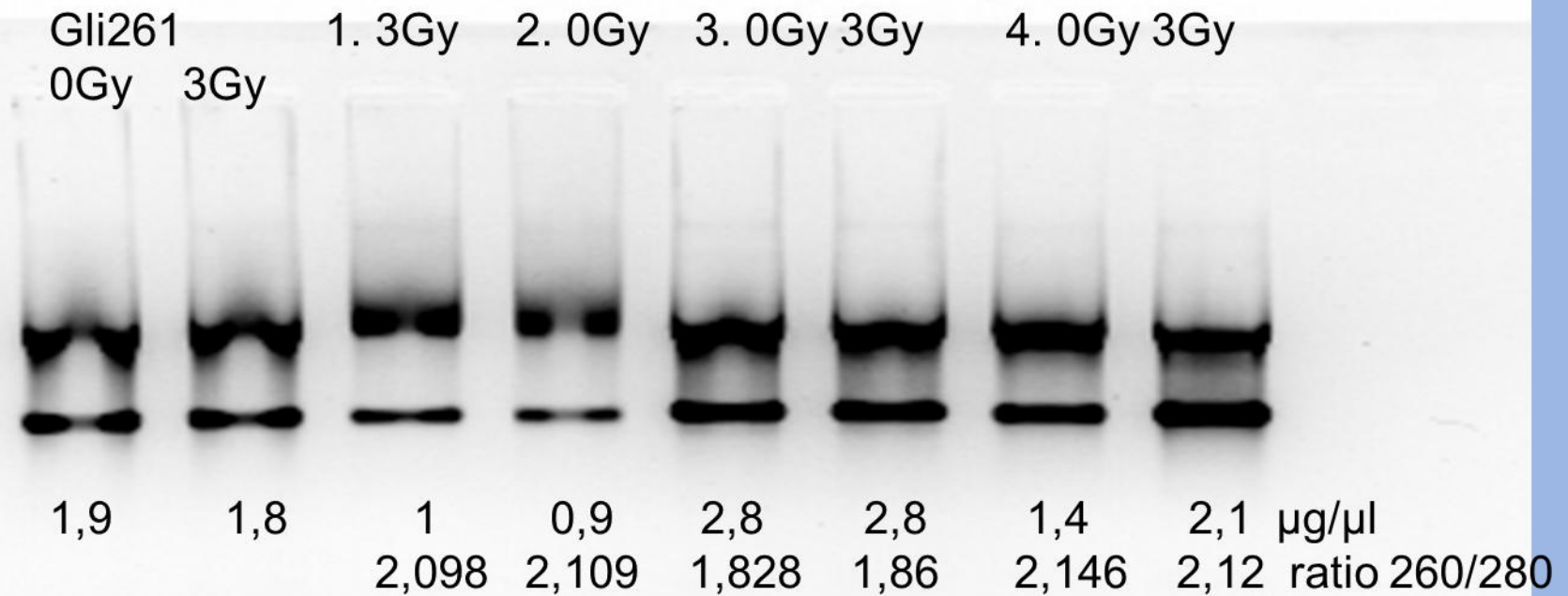
# RNA gel picture



# RNA gel elfo troubleshooting



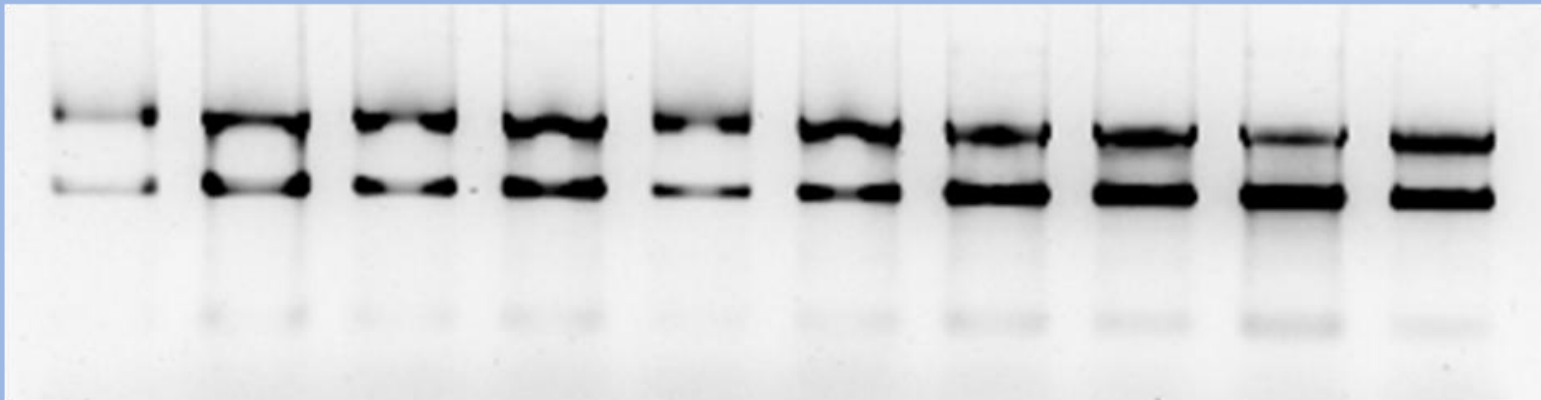
# RNA isolation groups 3-4



# RNA isolation Group 1-2.

Gli261

0Gy 3Gy 6. 0Gy 3Gy 5. 0Gy 3Gy 7. 0Gy 3Gy 8. 0Gy 3Gy



1,8 1,8 1,2 0,9 0,65 0,77 1,4 1,9 1,4 2,2  $\mu\text{g}/\mu\text{l}$

260/280 ratio was around 1,4 – old instrument